

Powerlines Trek

This is a popular 4WD day-trek close to Perth. Previously full of exciting challenging in muddy winter conditions, the track has been repaired to ensure your chances of getting bogged are removed. It still provides steep rocky inclines and good scenery.

This trek is located in the [WA Coast](#) region.

Start	Finish	Distance	Min Days	Rating
Mundaring, Perth	Mundaring, Perth	Actual 4WD section is 12.7km	1	3

Description

This is a popular trek with local driver training operators as it contains numerous obstacles of varying degree of difficulty and is not in a National Park area, hence no permits are required. If you're looking for a secluded bush drive, this one might not be for you.

Of course, this is also a great trek to undertake on your own to test out your skill and vehicle setup. These notes should help you prepare for such a trip.

The route follows the service track for the powerlines and is a series of steep valleys. The views at the top of each crest are quite amazing and the flora changes considerably from the winter season, when things are wet, slippery, muddy and very boggy, to the summer season when things are bone dry and rutted due to serious erosion caused from the previous winter. The vegetation includes tall eucalypts, cycads and various heath scrubs and the soils vary from sands to clay with the colours changing from white to red. Local wallabies are often sited, particularly during cool and overcast days.

Each year, and throughout the year, this trek changes considerably due to the effects of weather and the fact that the council actually put a fair bit of maintenance work into this track. None of this actually affects the trek as such, but affects the degree of difficulty, or ease, that you will experience in completing the trip.



After first turning onto Nganguring Road the track is not too difficult, but can be slow, until meeting up with what appears to be a dead end at the top of a steep valley marked by the enormous power poles.

You will see several very large boulders blocking the path ahead - this is a safety precaution to stop vehicles falling down the valley.

The path veers off hard to the left and begins a very steep descent

We have not listed a specific route through here as there are various diversions - all join up in the end

Take whichever track best suits your level of skill and conditions on the day.

The left one is the easiest, the one straight down the centre a little more difficult. Either one is a very steep descent.



This dip (caused by a spring that flows across the track during winter) has for many years trapped drivers who have assumed the deep spring is just a puddle.

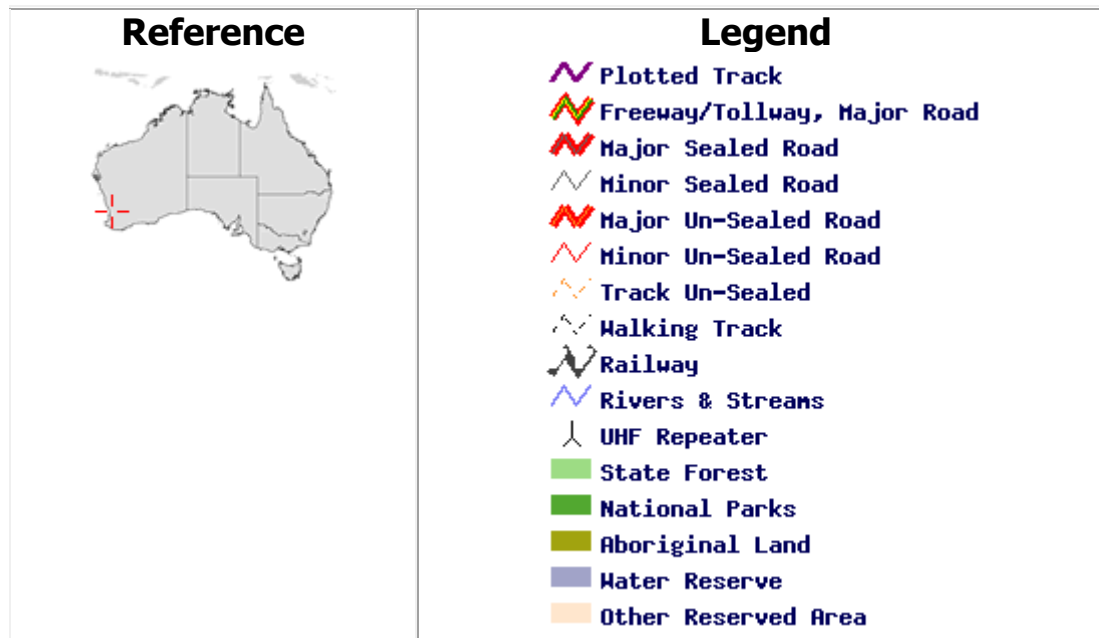
This dip has been graded out and no longer presents any challenge.

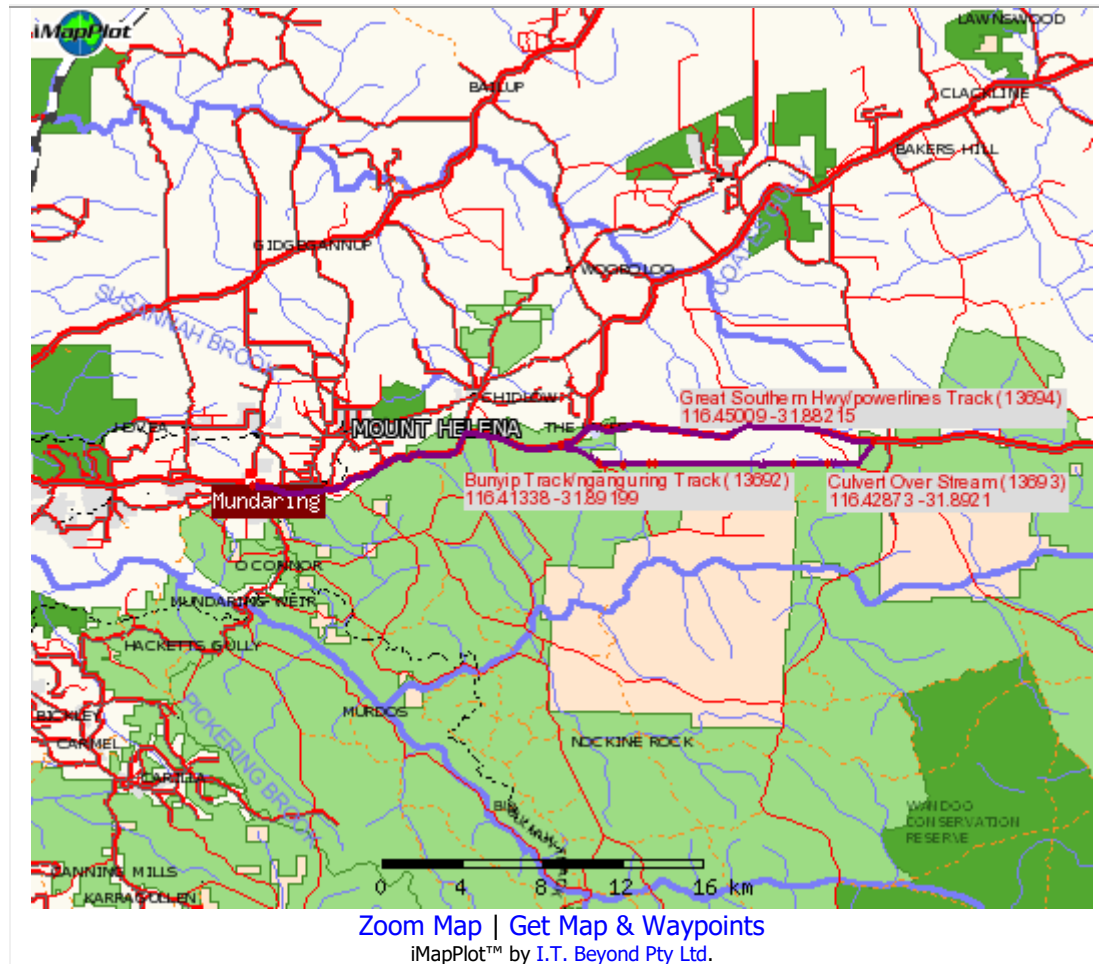
After numerous valleys, crests, climbs and dips, there is a final steep, rocky hill climb before coming out of the valley. The track skirts the fence line of farming property that in winter is lush and green.

A river used to flood the track at this point but a culvert (bridge) has been built to ensure a dry crossing. So, in all this trek is now passable with ease during summer and winter.

The old bail-out crossing has been blocked by boulders to ensure all travellers take the main route.

Map





Preparation

Fuel Supplies

Perth, Mundaring, Sawyers Valley, York

Best time to visit

April - November

Permits

None

Supplies/Facilities

Perth, Mundaring, Sawyers Valley, York

General

There are several extreme slopes to tackle and much of the trip includes steep, deeply rutted tracks and access roads making this trip suitable for experienced 4WDers only.

Note: the area is greatly affected by wet weather and during winter can be an extremely boggy location, whilst in summer is slightly less challenging.

Things to See & Do

Bushland, mud driving.

Environment

Sawyers Valley and Mundaring lie in the transitional zone between the Darling Range and the wheat belt and really are the "heart of the hills". The predominant tree species are Wandoo (*E. wandoo*, a large white barked eucalypt), Jarrah (*E. marginata*) and Marri (*E. calophylla*), both of which are large, dark barked eucalypts. Large under storey thickets also occur frequently.

Scattered rocks in the terrain are mostly granite, but laterite cap rock occurs along some ridges, slopes and hill tops.

In summary the terrain is quite variable, mostly undulating, with deeply incised gully systems on the slopes, few tracks, some complex rock sections with the flatter areas being relatively featureless.

History

The Powerline Track follows an active powerline carrying electricity from Muja power station. Collie supplies much of the South of Western Australia with electricity via Muja Power Station, which came on line 1969 and the newer Collie Power Station that commenced operations in May 1999.

Mundaring - from the Aboriginal word 'Mindah-lung', is the site of one of Australia's greatest engineering feats - the Mundaring Weir and the Golden Pipeline, which carries water all the way to Kalgoorlie.

The first European into the Mundaring area was Ensign Robert Dale who, in 1829, traced the Helena River upstream to a point near the present site of the Mundaring Weir. The nearby town of Sawyers Valley began as a pit sawyers' settlement in the 1860's. Today, many of the original sawpits can still be seen. The first freehold land in the area wasn't granted until 1882 and it wasn't until 1889 that a sawmill opened in the area and timber cutters moved in to exploit the extensive stands of jarrah and karri. The timber trade was the mainstay of the place for many years.

Driving Notes

SO=straight on, SP=sign post, TR=turn right, TL=turn left, VR=veer right, VL=veer left, KR=keep right, KL=keep left, T/O=turn off

Section Start: Mundaring Section End: Mundaring

Head east from Midland along the Great Eastern Highway until you reach Mundaring

Forward	Information	Reverse
▼0 km	At lights at junction of Great Eastern Hwy and Hodgson Street (Mundaring), set trip meter to zero. Continue east along Great Eastern Highway.	57.5 km ▲
	Waypoint 13686	
	(14.5 km)	
▼14.5 km	TR at Flynn Road.	
	This is a well graded dirt track.	
	TR	43 km ▲
	Waypoint 13687	
	(1.9 km)	
▼16.4 km	TL under power lines. This is the start of the Nganguring Track. The track continues in an obvious straight line under the power lines for the next 12km.	
	SO	41.1 km ▲
	Waypoint 13688	
	(1 km)	
▼17.4 km	SO	
	"Bridge" over stream	
	SO	40.1 km ▲
	Waypoint 13689	
	(3.8 km)	
▼21.2 km	Large boulders blocking the path. This is a safety precaution to stop vehicles falling down the valley. It is a good idea to get out and access the track you intend to take. The left one is the easiest, the one straight down the centre a little more	

	difficult. Either one is a steep descent.		
	Waypoint 13690		
	(0.3 km)		
▼21.5 km	SO		
	A spring used to flow across the track here, but now there is a graded dip across it – your choice!		
		SO	36 km ▲
	Waypoint 13691		
	(3 km)		
▼24.5 km	SO		
	Junction Bunyip Rd / Nganguring Rd		
		SO	33 km ▲
	Waypoint 13692		
	(0.8 km)		
▼25.3 km	SO		
	Water holes on track in Winter		
		SO	32.2 km ▲
	(1.4 km)		
▼26.7 km	SO		
	A stream used to flood the track at this point, but a culvert has now been put in to ensure a dry crossing.		
		SO	30.8 km ▲
	Waypoint 13693		
	(0.9 km)		
▼27.6 km	SO - West Talbot Road		
	SP - National Park		
		SO - West Talbot Road	29.9 km ▲
	(0.3 km)		
▼27.9 km	VL at Y junction - follow power lines		
		SO	29.6 km ▲
	(1.2 km)		

▼29.1 km	TL at junction here with Great Southern Hwy. Perth is about 65km west, and York is about 35km east.	
	Waypoint 13694	
	(12.5 km)	
▼41.6 km	Entry into "Lakes" Roadhouse. Veer left at junction of Great Southern Hwy and Great Eastern Hwy at "The Lakes" to return to Perth.	
	Waypoint 13695	
	(15.9 km)	
▼57.5 km	Back at lights at junction of Great Eastern Hwy and Hodgson Street. SO to return to Perth.	
	Waypoint 13686	

Waypoints

Waypoint	Description	Type	Longitude WGS84	Latitude WGS84
13686	Great Eastern Hwy/Hodgson St	Intersection/Turn Off	116.167890°E	31.902030°S
13687	Great Eastern Hwy/Flynn Rd	Intersection/Turn Off	116.308570°E	31.884050°S
13688	Ngunguring Track	Intersection/Turn Off	116.325270°E	31.891980°S
13689	Bridge	Point of Interest	116.336490°E	31.892430°S
13690	Large boulders blocking path	Point of Interest	116.347740°E	31.892110°S
13691	Graded dip across stream	Point of Interest	116.351020°E	31.892040°S
13692	Bunyip Track/Nganguring Track	Intersection/Turn Off	116.413380°E	31.891990°S
13693	Culvert over stream	Point of Interest	116.428730°E	31.892100°S
13694	Great Southern Hwy/Powerlines Track	Intersection/Turn Off	116.450090°E	31.882150°S